



NICRETE

PRODUCT CATALOG

NITTERHOUSE



MASONRY PRODUCTS, LLC





NICRETE THIN SERIES

Nicrete Thin Series was developed for ease of renovations and transforming an existing wall. Our Nicrete Thin Series can be applied with an adhesive in a track style. It looks great around fireplaces and other interior applications. Nicrete Thin Series is made with the same high quality standards, colors, and textures that is found in our regular Nicrete lines.

Note: All material is produced to order. No Stock.

SIZES:

Height and length the same sizes as Nicrete Classic & Traditional

Depth: Classic: 1"

Depth: Traditional: 3/4"



A-13 Snow White



A-18 Caramel Chip



A-41 Beige



A-68 Mocha Mist



A-71 Glacier Blend



A-75 Pink Mist



J-12 Dove Grey



J-61 Mauve



J-90 Limestone Blend



J-91 Earthen Blend



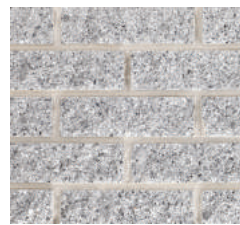
J-92 Rustic Blend



NM-130 Sandstone Blend



NM-141 Tan



NM-144 Granite



NM-173 Adobe

NICRETE CLASSIC

Homes built with Nicrete Classic Brick promise owners a fresh, clean appearance and structural integrity for many decades. Our Nicrete Classic series has a split face which gives it a textured finish and is unsurpassed when it comes to color selection, sizes, durability, and aesthetics. The vibrant color of each brick goes all the way through the unit and will not chip or flake off. All bricks are solid units; therefore, special shapes are not needed around doors and windows.

SIZES:

All bed depths 3 5/8"

2 1/4" x 7 5/8" - stretcher & corner

2 1/4" x 15 5/8" - stretcher

2 5/8" x 7 5/8" - stretcher & corner

2 5/8" x 15 5/8" - stretcher

3 5/8" x 7 5/8" - stretcher

3 5/8" x 15 5/8" - stretcher



PINK MIST



WHITE



White



Beige Range



Chambers Rose Range



Cranberry Range



Rustic Buff Range



Georgetown Range



Burgundy Range



Charcoal Range

OVERSIZE OPTION



**Available in all color options.*

NICRETE TRADITIONAL

Our Nicrete Traditional CMU's have a smooth, matte finish with crisp, square edges ensuring clean lay lines and a snug fit. Like all Nicrete brick lines, the Traditional styles is also integrally colored, which means that the color of the brick goes completely through the unit. Nicrete Brick are also an excellent choice for commercial projects that require brick size masonry units.

SIZES:

- All bed depths 3 5/8"
- 2 1/4" x 7 5/8" - Standard Unit
- 2 5/8" x 7 5/8" - Oversize Unit



NICRETE CLASSIC A-41 & J-40



Glacier White



Fieldstone Buff Blend



Sandstone Blend



Limestone Gray Blend

GUILFORD STONE II



**Available in all color options.*

GUILFORD STONE I & II

Guilford Stone offers a unique and economic alternative to achieve a cut stone look. The exceptional quality and lasting beauty is evident in each tumbled brick. Guilford Stone is available in two functional sizes and each is produced with a finished end for use as a corner piece when needed.

SIZES:

Guilford Stone I: 3 5/8" x 3 5/8" x 7 5/8", 4.5 pieces per sq ft.

Guilford Stone II: 3 5/8" x 3 5/8" x 11 5/8", 3 pieces per sq ft.



SANDSTONE BLEND



CHESTNUT BLEND



Desert Blend



Rustic Blend



Mahogany Blend



Pecan Blend



Chestnut Blend



Nightfall Blend

MONARCH BLOX

Nitterhouse's alternative to the look of clay brick is our Monarch Blox. They are 1/2 high through wall units, thus, they are the height of regular brick but length and depth of a regular block. Our Monarch Blox are integrally colored and the perfect choice for fast-track jobs that want the look of brick. These units meet ASTM-C90 standard for load bearing concrete masonry and can be used in both above and below grade applications.

SIZES:

3 5/8" x 3 5/8" x 15 5/8"

7 5/8" x 3 5/8" x 15 5/8"

11 5/8" x 3 5/8" x 15 5/8"

OUR HISTORY

1923

In March, William L. Nitterhouse manufactured the first piece of concrete for his new company.

NITTERHOUSE THROUGH THE YEARS

Five generations of integrity & innovation

2017



William L. Nitterhouse, Founder of Nitterhouse Concrete Products; pictured with one of his sons, Jimmy.



The original block plant located on Lortz Avenue in Chambersburg, PA. William L. Nitterhouse originally produced block in his garage. He expanded as the company grew until later when an actual plant to produce block was built down the street.



T.K. Nitterhouse, 2nd generation (seated) and William K. Nitterhouse, 3rd generation. This photograph was taken for an article in a local newspaper. William K. Nitterhouse began running one of the block plants at age 19 and continued to build the company into what it is today.



William K. Nitterhouse is photographed here for an ad in Life Magazine for an insurance company. He is standing beside a hollow core plank – one of the main products that we still produce today.



From Left to Right:
William K. Nitterhouse (3rd Generation), Laura Diller (5th Generation),
Karen Nitterhouse Diller (4th Generation), Barry Diller (4th Generation),
and Matthew Diller (5th Generation).



NICRETE TRADITIONAL GEORGETOWN RANGE & BEIGE RANGE

NITTERHOUSE


MASONRY PRODUCTS, LLC

859 CLEVELAND AVENUE | CHAMBERSBURG, PA 17201
717-267-4500 | NITTERHOUSEMASONRY.COM